

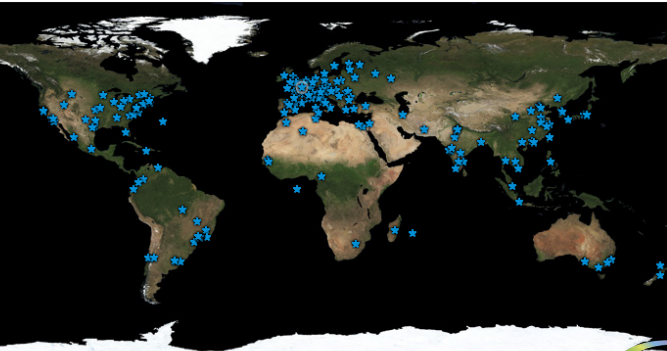


Consolidating OW2 Project Metrics with GrimoireLab

CHAOSCon + GrimoireCon Europe 2018

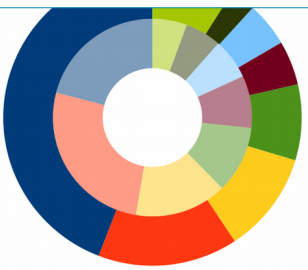
Assad Montasser

Brussels, Feb. 2018



Non-Profit Open Source Organization European and Global

Community



- Europe 44%
- France 15%
- China 11%
- North America 8%
- India 5%
- Asia 5%
- Lat America 3%
- ROW 9%

Activities



Governance



Members



Code Base

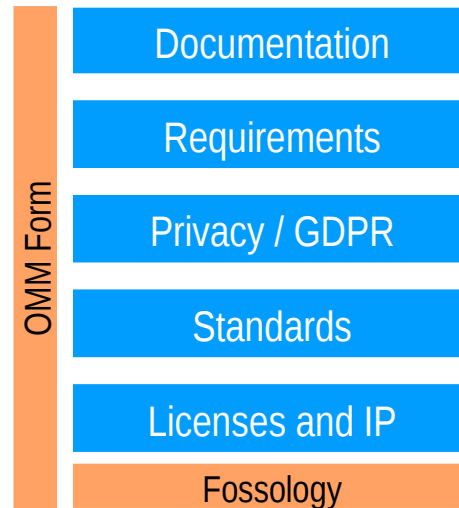


OW2 OSCAR

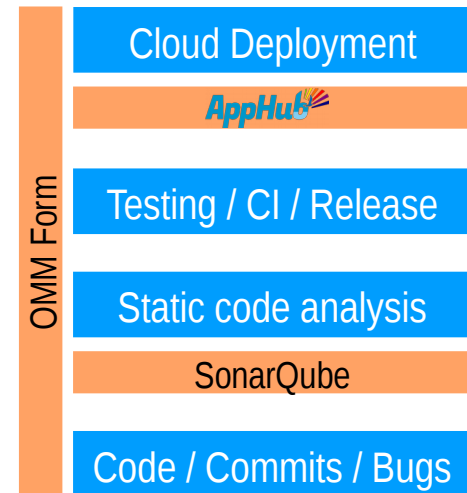
- A methodology and a platform
- Quality assessment tools
- Raw data + risk assessment models
- Transparent information on projects
- Check-list of best practices to reach market maturity



 Metrics / Scorecards

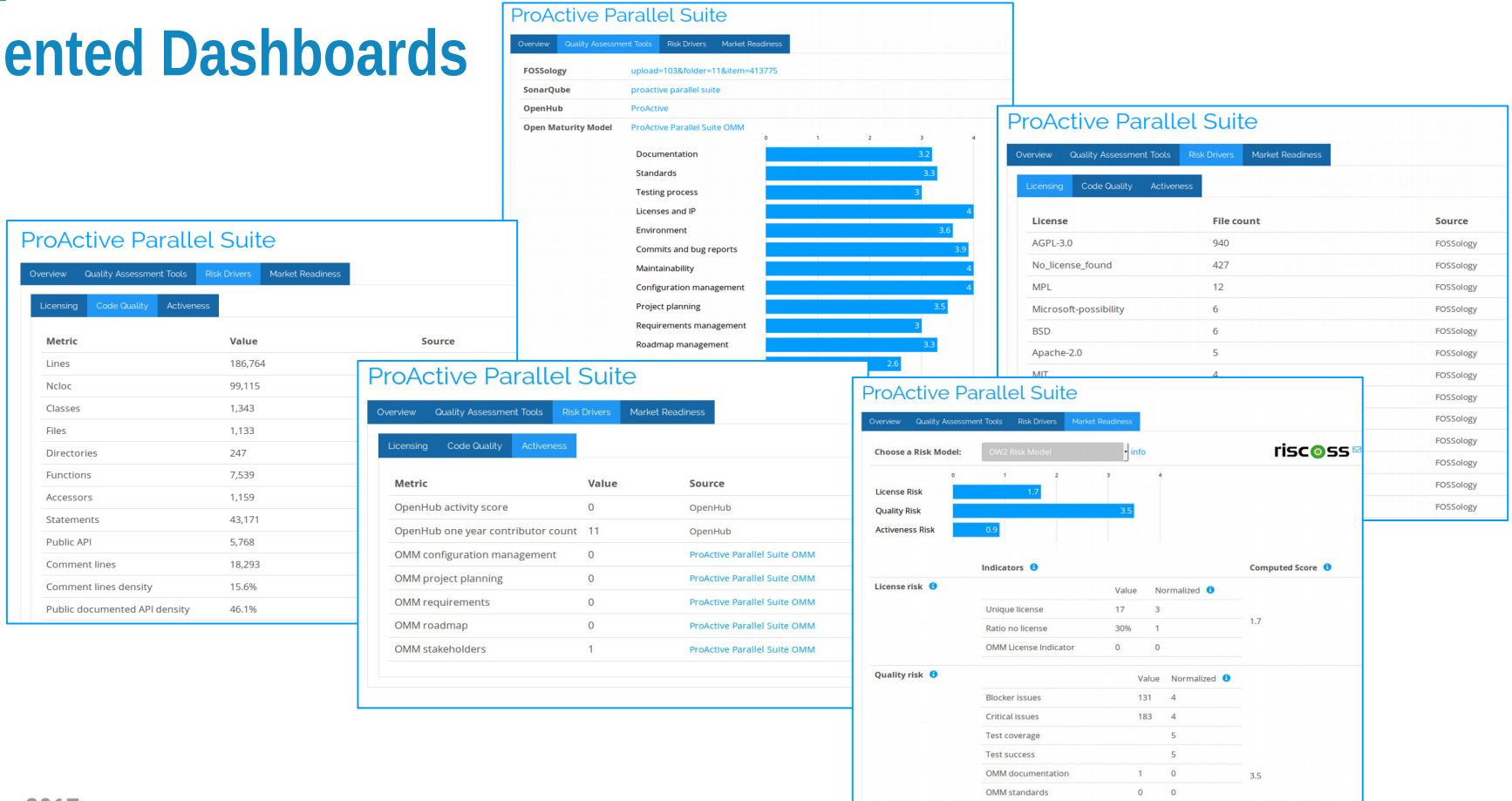


 Governance



 Engineering

Today: Fragmented Dashboards





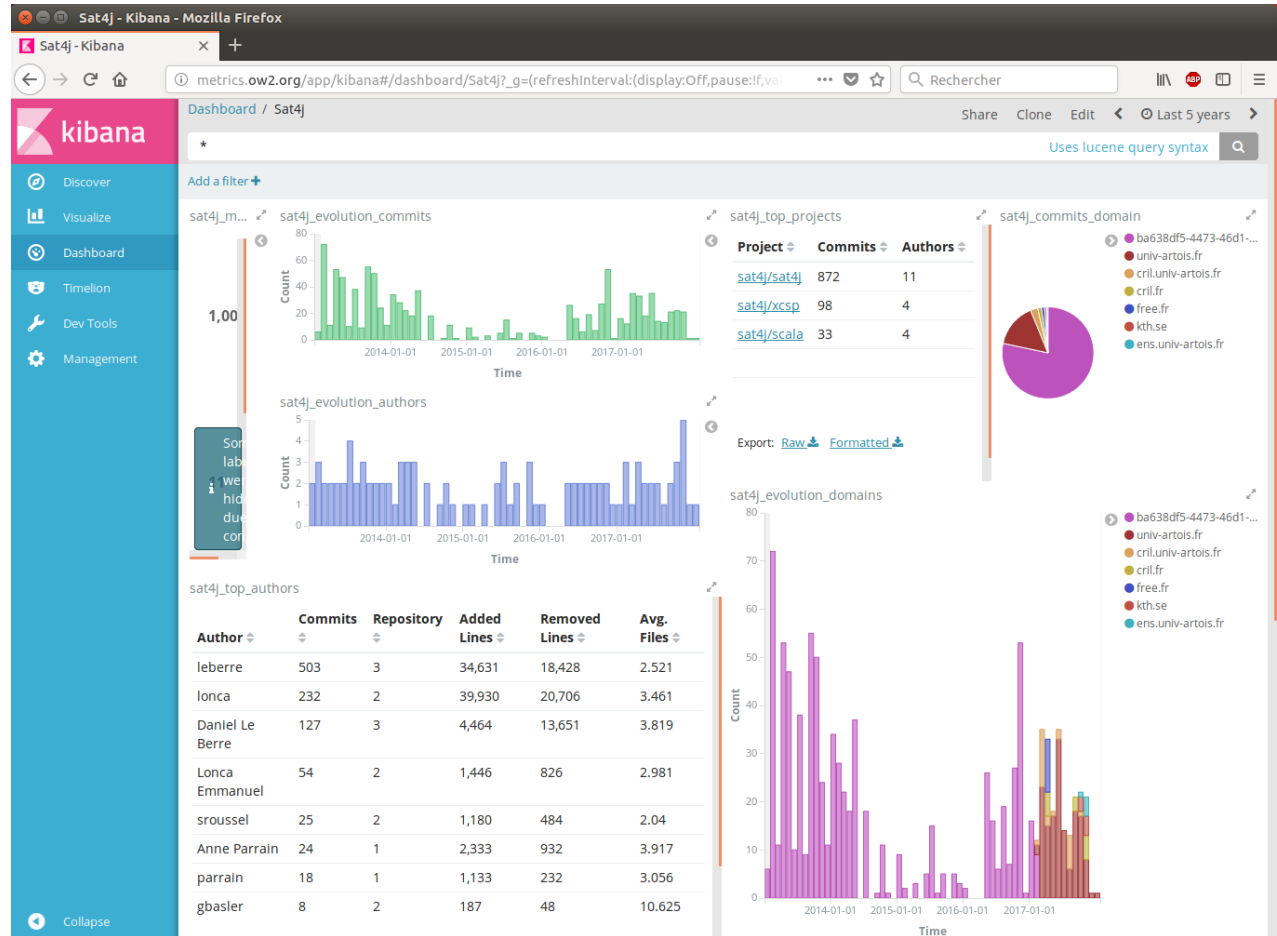
OW2 & GrimoireLab

OW2 & GrimoireLab



- ▶ URL : <http://metrics.ow2.org>
- ▶ Commits tracking on a Gitlab repository
 - ▶ Perceval Git backend allows to retrieve commits both on Github and Gitlab repositories
 - ▶ Metrics on commits by author for each project inside a repository
 - ▶ Metrics on commits by project for each author
 - ▶ Metrics on evolution of commits by time and by author

Tomorrow: Consolidated Dashboards



OW2 & GrimoireLab



▶ Issue tracking on a Gitlab repository

- ▶ Perceval Gitlab backend allows to retrieve issues in Gitlab repository

- ▶ Github:

<https://github.com/grimoirelab/perceval/blob/master/perceval/backends/core/gitlab.py>

▶ Next steps

- ▶ Integration in grimoireelk in order to store enriched items in ElasticSearch

- ▶ Kibana dashboard in order to show metrics

OW2 & GrimoireLab Gitlab API



```
Mozilla Firefox
Sat4j - Kibana  GrimoireELK/utills at m...  perceval/gitlab.py at m...  gitlab.ow2.org/api/v4/p...
https://gitlab.ow2.org/api/v4/projects/sat4j%2Fsat4j/issues?private_token=...
JSON  Données brutes  En-têtes
Enregistrer Copier  Filtre le JSON
0:
  id: 2612
  iid: 5
  project_id: 41
  title: "Allow testing of Sat4j on both Java 7 and Java 8 VMs"
  description: "A user described that the behavior of Sat4j could be different on Java 7 and Java 8 VM.\n\nIn order to study that, we need to be able to launch the tests both on a Java 7 and a Java 8 context."
  state: "closed"
  created_at: "2017-08-23T15:09:25.876Z"
  updated_at: "2017-09-21T19:50:48.258Z"
  closed_at: "2017-09-21T19:50:48.060Z"
  labels: []
  milestone: null
  assignees: []
  author:
    id: 25
    name: "Daniel Le Berre"
    username: "leberre"
    state: "active"
    avatar_url: "https://gitlab.ow2.org/uploads/-/system/user/avatar/25/avatar.png"
    web_url: "https://gitlab.ow2.org/leberre"
  assignee: null
  user_notes_count: 1
  upvotes: 0
  downvotes: 0
  due_date: null
  confidential: false
  discussion_locked: null
  web_url: "https://gitlab.ow2.org/sat4j/sat4j/issues/5"
  time_stats:
    time_estimate: 0
    total_time_spent: 0
    human_time_estimate: null
    human_total_time_spent: null
1:
  id: 127
  iid: 4
  project_id: 41
  title: "How can we explain that SonarDube identifies 2.2k unit tests in Sat4j and a coverage of 0?"
  description: "At https://sonarqube.ow2.org/dashboard?id=org.ow2.sat4j%3Aorg.ow2.sat4j.pom"
  state: "closed"
  created_at: "2017-03-23T10:22:21.700Z"
  updated_at: "2017-06-08T15:15:44.981Z"
  closed_at: null
  labels: []
  ..
  ..
```

OW2 & GrimoireLab



▶ Next steps

- ▶ Mbox messages metrics using GrimoireLab
- ▶ Download statistics: for the moment in stand by until technical solution for File Release System decided internally

A world map with numerous small blue stars scattered across the continents, primarily concentrated in North America, Europe, and Asia. A large blue circle is overlaid on the map, framing the central text.

Thank You

And now let's talk
Q&A
Disagreements
Complements
Feedback
etc.



www.ow2.org

For more details please contact Cedric Thomas, OW2 CEO, cedric.thomas@ow2.org