

The State of the GrimoireLab

J. **Manrique** López de la Fuente

Bitergia CEO

#CHAOSCon #GrimoireLab

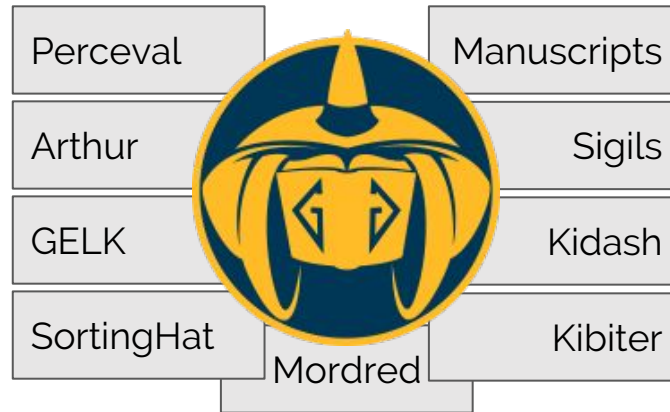
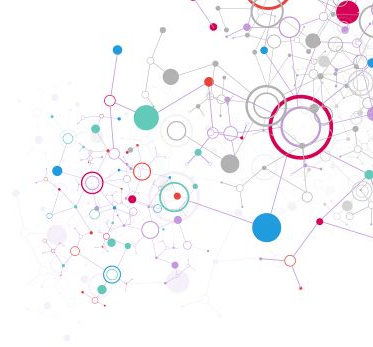
Brussels, Feb. 2, 2018

CHAOS

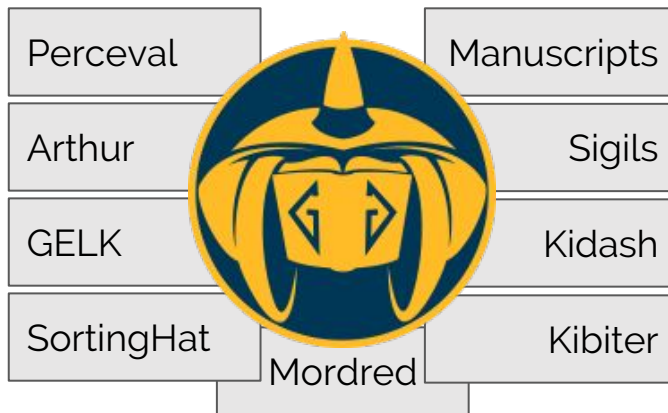
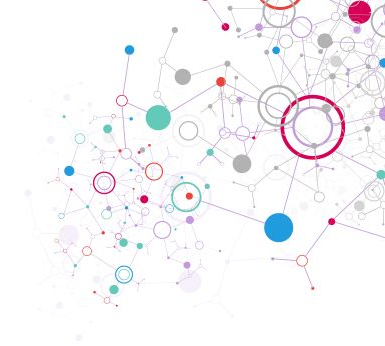
chaoss.community



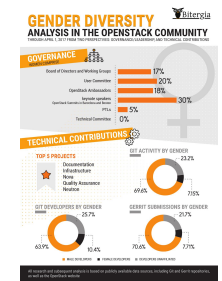
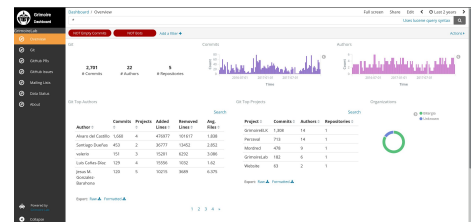
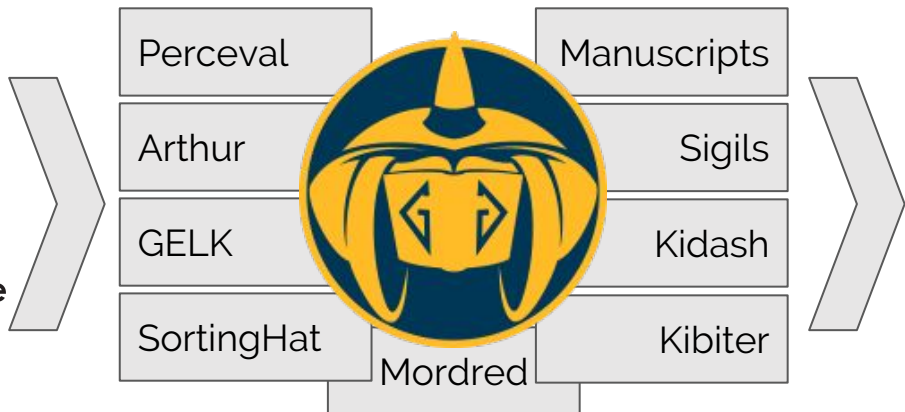
GrimoireLab



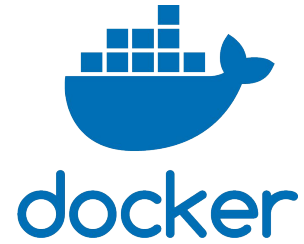
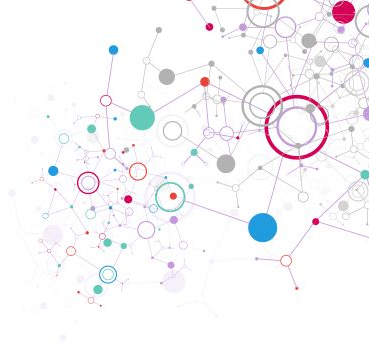
GrimoireLab



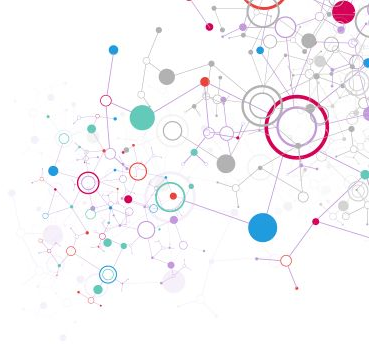
GrimoireLab



GrimoireLab Technology

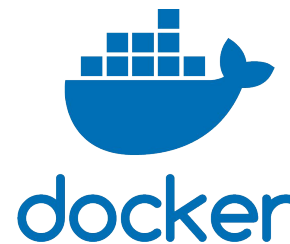
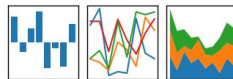


GrimoireLab Technology



pandas

$$y_{it} = \beta' x_{it} + \mu_i + \epsilon_{it}$$



django



elasticsearch

kibana

Extracting Knowledge From CHAOSS

CHAOSS will develop metrics, including:

- › Project lifecycle
- › Diversity and inclusion
- › Risk and provenance
- › Ecosystem impact

In addition...

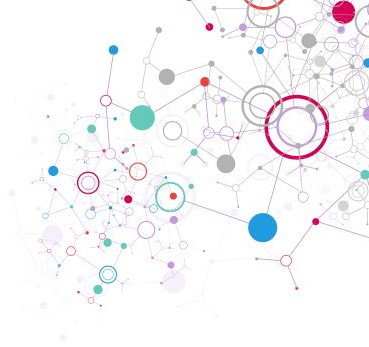
- › Develop a FLOSS reference implementation of defined metrics
- › Integrate GrimoireLab, Prospector and Cregit into a collaborative framework
- › Develop a better understanding of how contributions happen

Backed by:

- › Red Hat, Bitergia, Eclipse Foundation, Linaro, Mozilla, OpenStack, Polytechnique Montreal, Sauce Labs, Software Sustainability Institute, Symphony Software Foundation, University of Missouri, University of Mons, University of Nebraska at Omaha, and University of Victoria, Laval University, and Jono Bacon Consulting

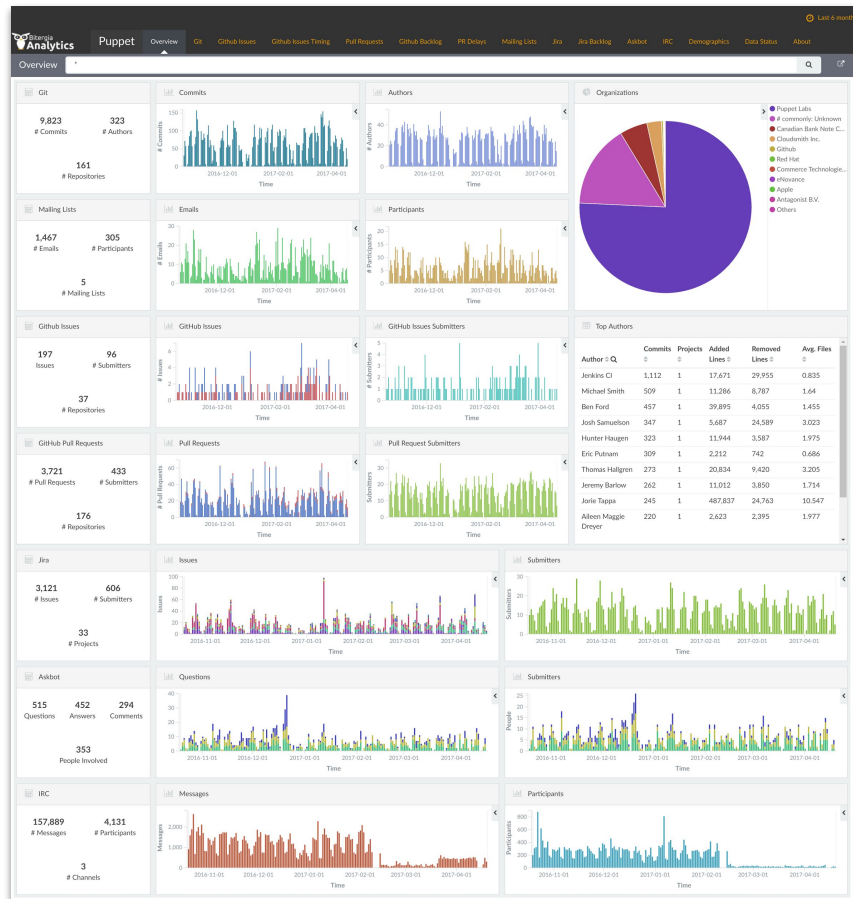
The logo for CHAOSS, where the 'O' is a colorful circular icon composed of segments in red, blue, green, and purple.

1 year ago: How to run it?





1 year ago



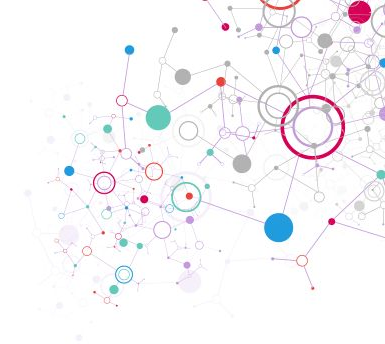
Objective #1: Make it easier

From a single container:

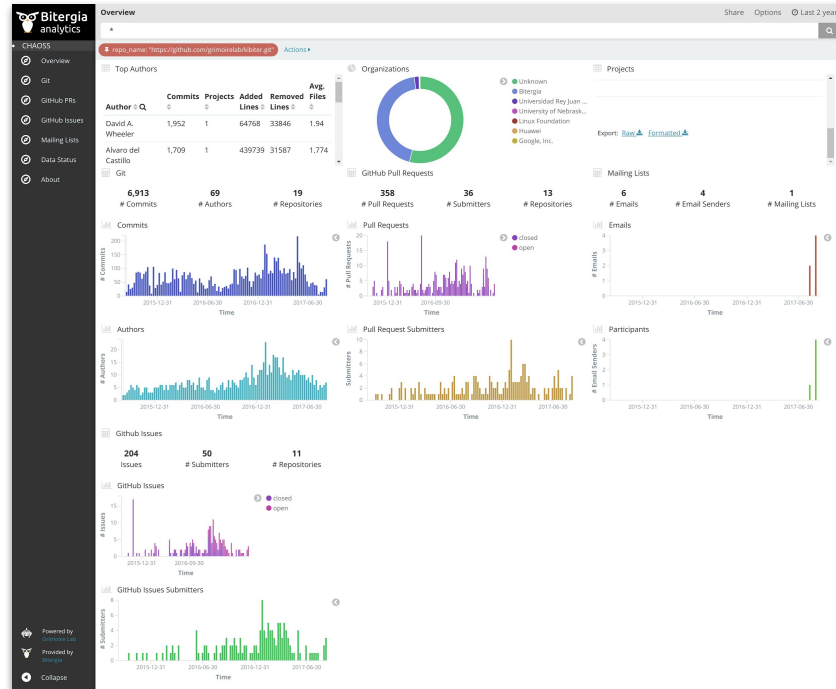
```
$ docker run -p 127.0.0.1:5601:5601 \  
  -v $(pwd)/mordred-local.cfg:/mordred-local.cfg \  
  -t grimoirelab/full
```

From a multi-container Docker environment:

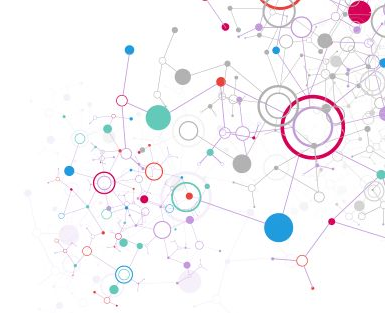
```
$ docker-compose up -d
```



New dashboards UI (based on Kibana 5)



Data Sources (~ 30, and growing)



Source Code

Git, Baazar*, Mercurial* (*exporting to git)



Tickets / issues

Bugzilla, GitHub Issues, JIRA, Maniquest, Redmine



Code Review

Gerrit, GitHub Pull Requests



Continuous Integration

Jenkins



Mailing lists / Forums

Askbot, Discourse, Gmane, Hyperkitty, mbox files, [NNTP](#), Piplermail, Stack Exchange



Chat

IRC (Supybot), Slack, Telegram



Downloads

Apache http logs



Wiki

Confluence, MediaWiki



Meetings

Meetup

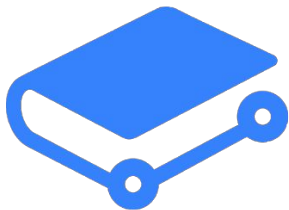
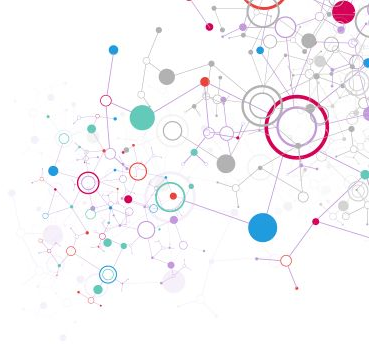


Others

DockerHub, [RSS](#), Twitter

Yes, GrimoireLab
supports Slack!

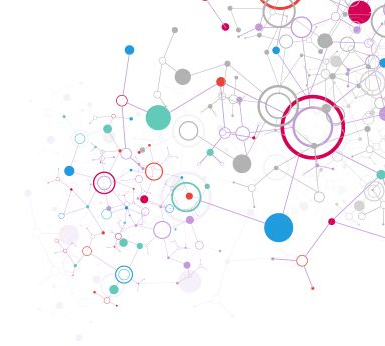
Documentation, docs, docs, docs...



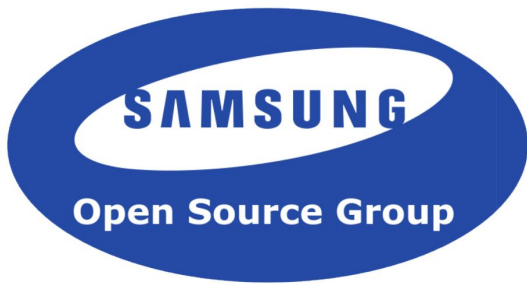
GrimoireLab Training Tutorial

grimoirelab.gitbooks.io/training/

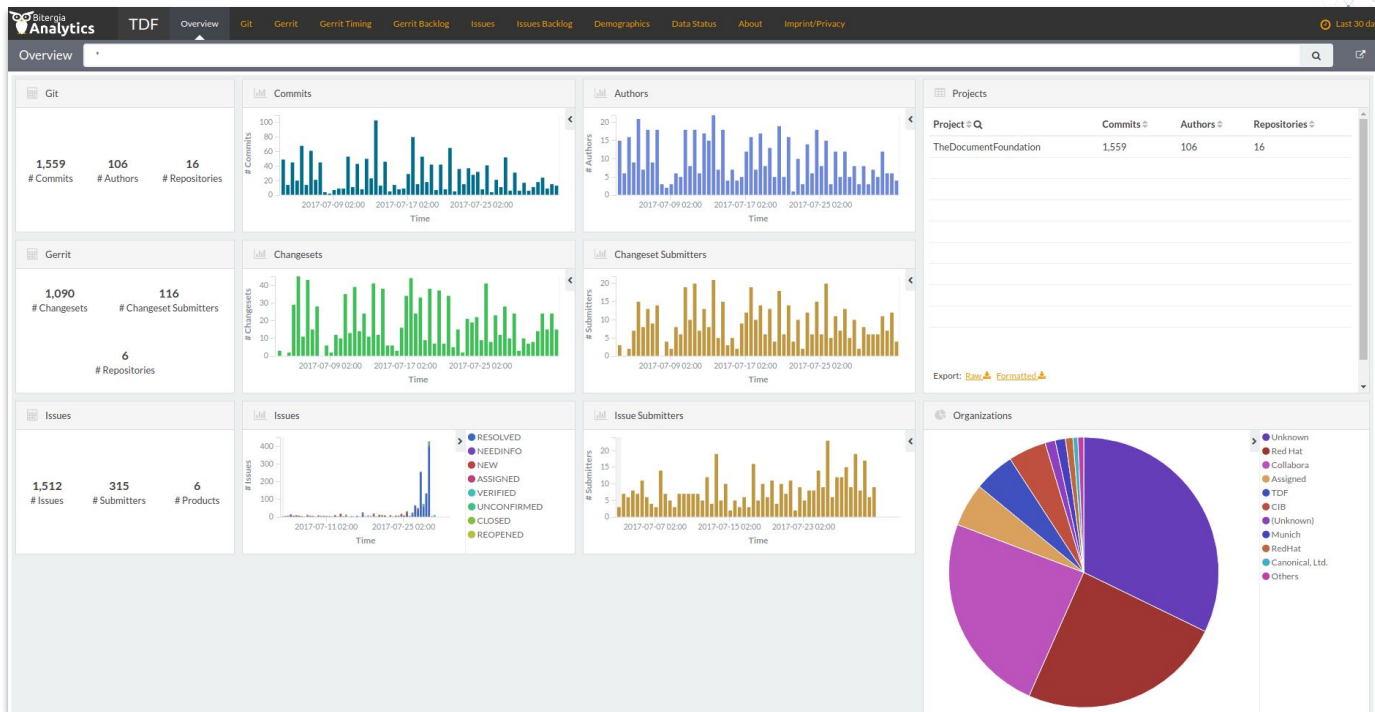
Use cases



LIFERAY®



The Document Foundation



The Document Foundation

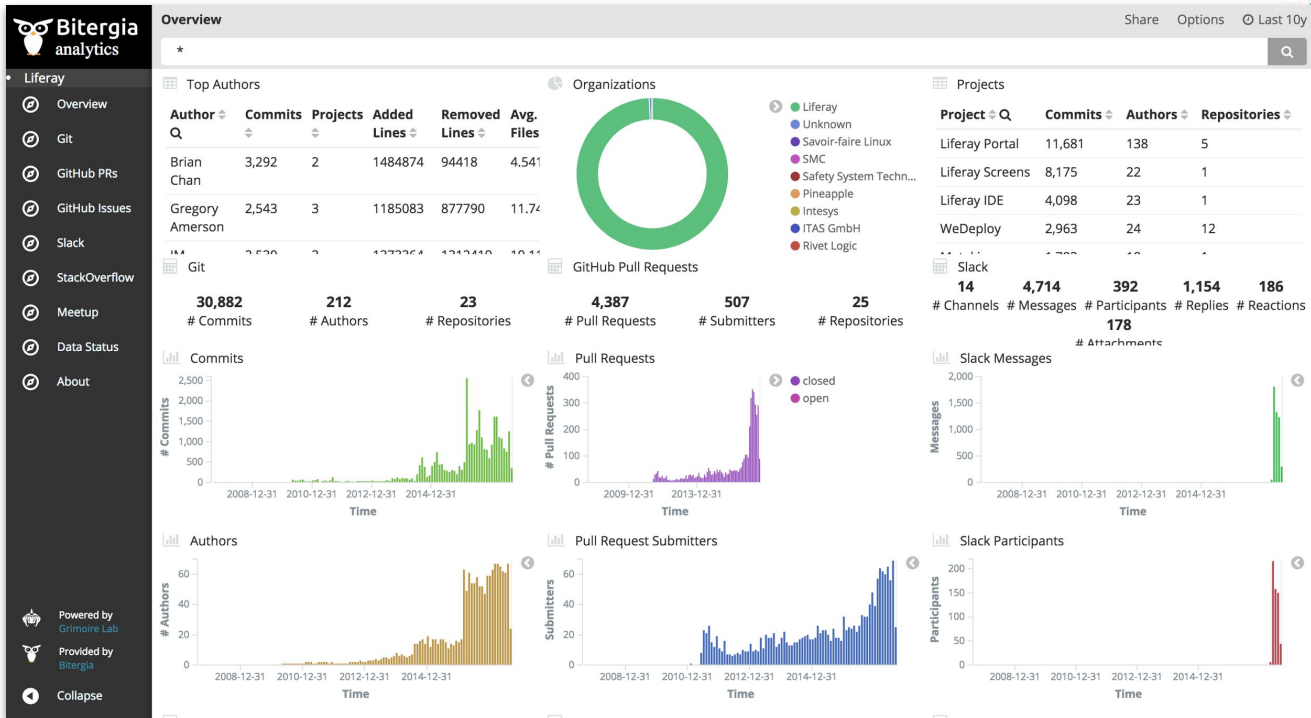
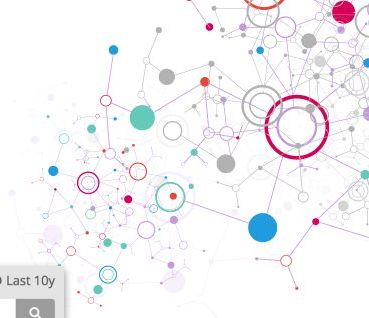


“The Document Foundation offers a transparent overview of LibreOffice development with the announcement of a Dashboard, available at <http://dashboard.documentfoundation.org>, which provides a visual representation of the activity on the source code”

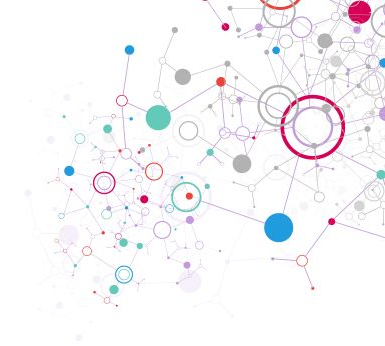
TDF Dashboard: an open window on LibreOffice development

bit.ly/tdf-dashboard

Liferay Inc.



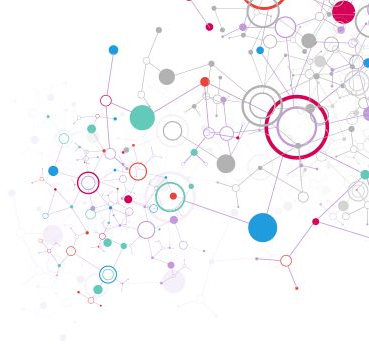
Liferay Inc.



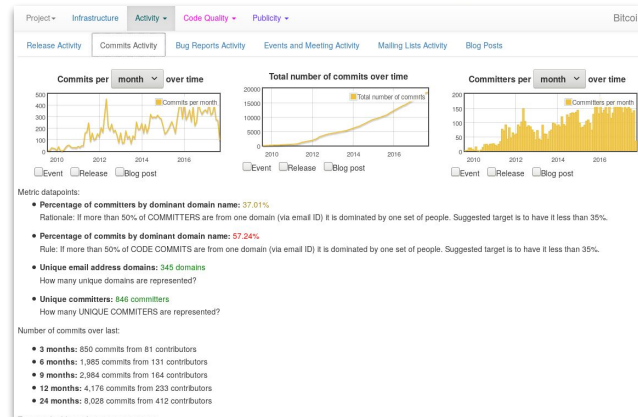
“Grimoire Lab gives us a well rounded picture of our overall community health to help determine the areas where we are doing good and the areas where we can help improve.”

Jamie Sammons - Developer Advocate at Liferay Inc.

Reuse, don't reinvent



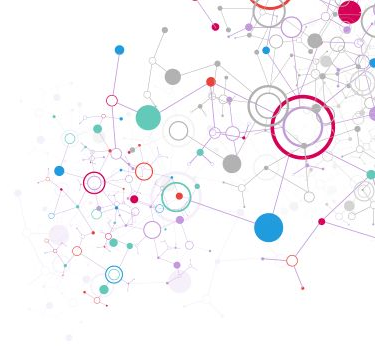
www.crossminer.org



PROSPECTOR

github.com/chaoss/prospector

But, there is still a lot to do...



Improve documentation for users and developers

Panels for specific use cases

Improve UX

...



Join the GrimoireLab community



[github.com/chaoss/grimoirelab-*](https://github.com/chaoss/grimoirelab-)
(repositories being migrated from
github.com/grimoirelab)



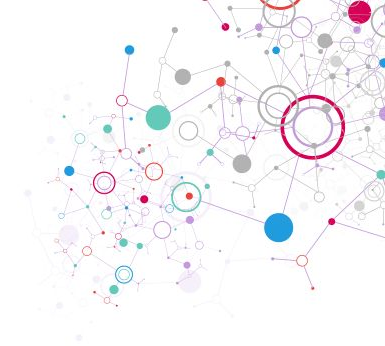
bit.ly/grimoirelab-mailman

#irc

#GrimoireLab in
irc.freenode.net



@GrimoireLab
#GrimoireLab



... one more thing?

Bestiary



Bestiary Editor

Ecosystem: GrimoireLab + Add

Projects + Add

Data Sources + Add

Scope

Projects	1
Data Sources	2
Repository Views	2

Import Download

Data source for in GrimoireLab

Data source type

- URL
- Params

askbot
bugzilla
bugzillarest
confluence
crates
discourse
dockerhub
functest
gerrit
git
github
gmane
hyperkitty
jenkins
jira
kitsune
mbox
mediawiki
meetup

Select Select Select

Remove

Powered by GrimoireLab

Hatstall



Hatstall Profile Information

localhost:8001/profiles/cc1000a28d57ed5351bb8a62dff5e37569b2df8/

Hatstall Profiles Organizations About

Profile info / cc1000a28d57ed5351bb8a62dff5e37569b2df8

Name J. Manrique Lopez de la Fuente

e-mail jsmanrique@bitergia.com

Bot?

Country

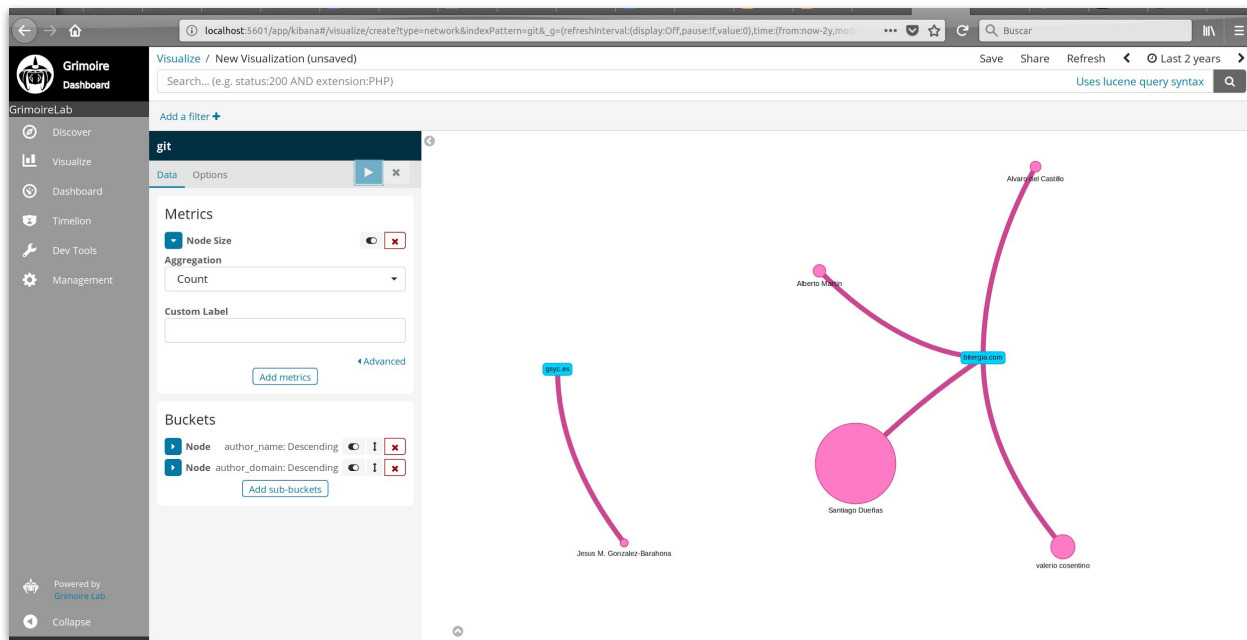
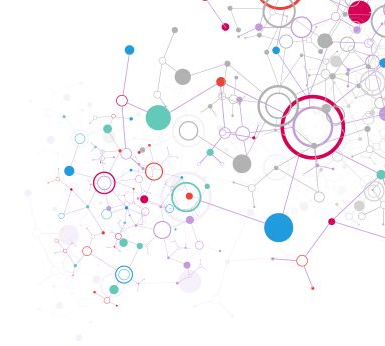
Enrollm

Organization to

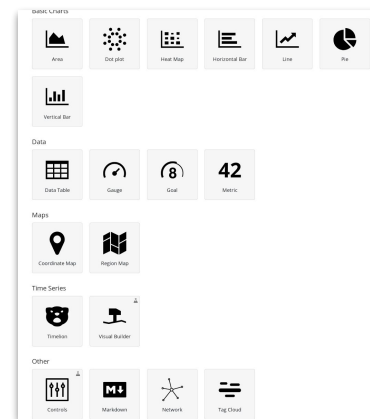
Profile Identities

Name	email	Username	Source
Manrique Lopez	None	jsmanrique	github <input type="button" value="unmerge"/>
J. Manrique Lopez de la Fuente	jsmanrique@bitergia.com	None	git

New Kibiter (based on Kibana 6.x)



New visualizations!



Join the GrimoireLab community



[github.com/chaoss/grimoirelab-*](https://github.com/chaoss/grimoirelab-)
(repositories being migrated from
github.com/grimoirelab)



bit.ly/grimoirelab-mailman

#irc

#GrimoireLab in
irc.freenode.net



@GrimoireLab
#GrimoireLab