
I have a GrimoireLab Dashboard, now what?

CHAOSCon/GrimoireCon
Brussels, Feb 2018

Alberto Pérez, Daniel Izquierdo
@alpgarcia, @dizquierdo
alpgarcia,dizquierdo at bitergia dot com
<https://speakerdeck.com/bitergia>



/outline

GrimoireLab Architecture

The basics of Kibana

GrimoireLab Standard Panels

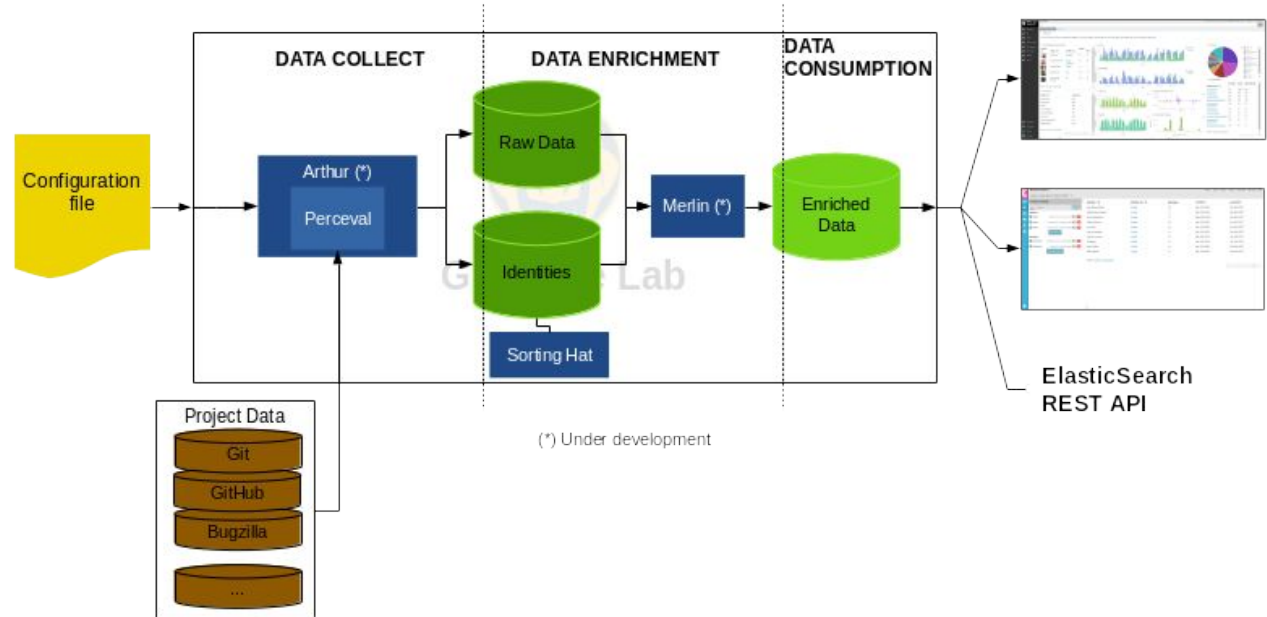
Use Cases



GrimoireLab Arch



Grimoire Lab Architecture (draft)



Kibana Basics

/kibana basics

Drill down

API access (ElasticSearch)

Time frame filters

Search box

Sharing/embedding

Navigation menu

Data export (csv)

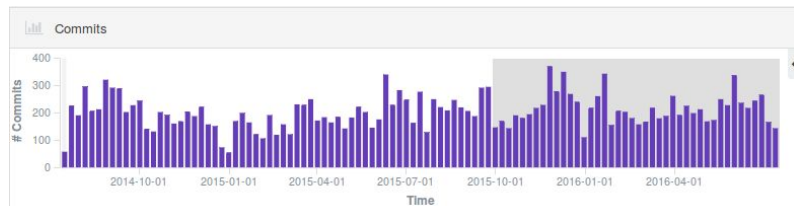
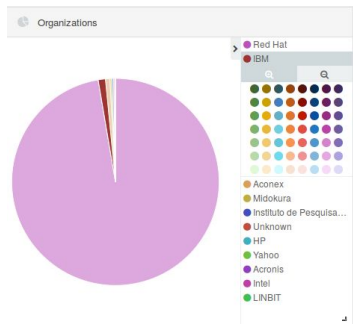
Data validation

/drill down

Interactive widgets

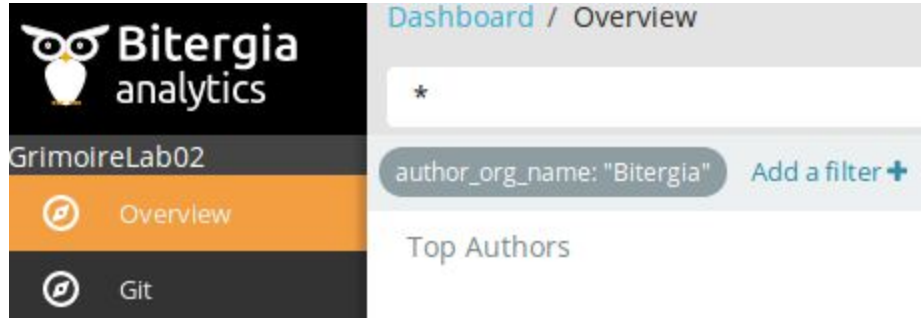
When clicked, the panel is updated

Repository	Commits	Authors	Organizations	Average Lines
git://gerrit.ovirt.org/ovirt-engine	12,297	108	7	135.941
git://gerrit.ovirt.org/vdsm	4,420	97	6	54.98
git://gerrit.ovirt.org/ovirt-node	956	10	2	19
git://gerrit.ovirt.org/jenkins	678	34	2	38.829
git://gerrit.ovirt.org/ovirt-hosted-engine-setup	471	18	3	75.66
git://gerrit.ovirt.org/ovirt-hosted-engine-ha	275	15	1	107.145
git://gerrit.ovirt.org/ovirt-engine-sdk	232	6	2	1,429.323



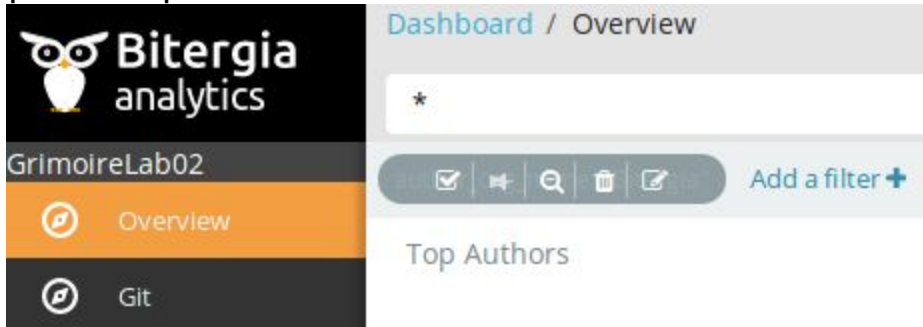
/drill down

When drilling down a filter appears



Mouse over:

Enable/disable, pin/unpin, Invert, remove, edit



/time filter

Special filter: timeframe at the top right corner

Any timeframe of activity can be selected

Dashboard / Overview Share Edit Auto-refresh Last 1 year

Time Range

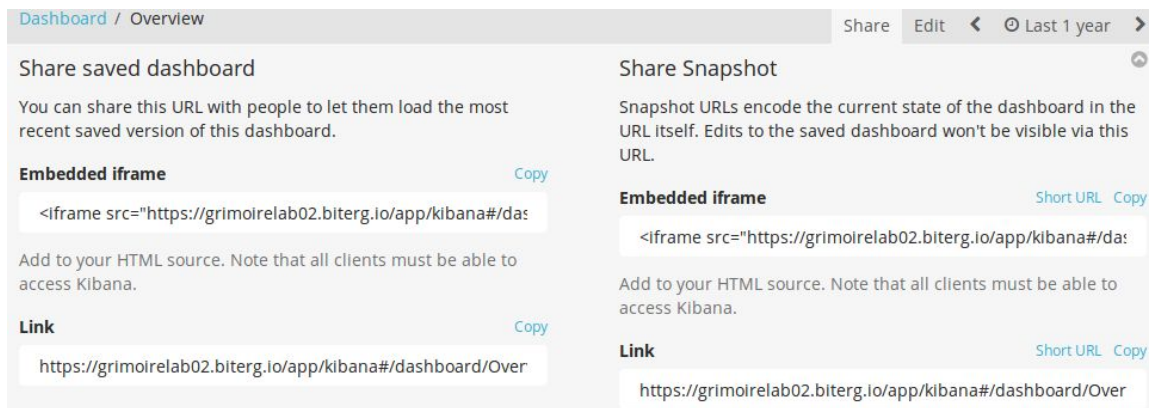
Quick	Today	Yesterday	Last 15 minutes	Last 30 days
	This week	Day before yesterday	Last 30 minutes	Last 60 days
Relative	This month	This day last week	Last 1 hour	Last 90 days
	This year	Previous week	Last 4 hours	Last 6 months
Absolute	The day so far	Previous month	Last 12 hours	Last 1 year
	Week to date	Previous year	Last 24 hours	Last 2 years
	Month to date		Last 7 days	Last 5 years
	Year to date			



You can share/embed panels at any moment

This shares the panels with the filters applied

Useful to share a specific panel with certain conditions



The screenshot shows the Kibana interface with a 'Share' dropdown menu open. The menu has two main sections: 'Share saved dashboard' and 'Share Snapshot'. Each section provides instructions on how to share the dashboard and offers options to copy an 'Embedded iframe' or a 'Link'. The 'Link' option includes a 'Short URL' feature.

Dashboard / Overview Share Edit < Last 1 year >

Share saved dashboard

You can share this URL with people to let them load the most recent saved version of this dashboard.

Embedded iframe [Copy](#)

```
<iframe src="https://grimoirelab02.biterg.io/app/kibana#/das
```

Add to your HTML source. Note that all clients must be able to access Kibana.

Link [Copy](#)

```
https://grimoirelab02.biterg.io/app/kibana#/dashboard/Over
```

Share Snapshot

Snapshot URLs encode the current state of the dashboard in the URL itself. Edits to the saved dashboard won't be visible via this URL.

Embedded iframe [Short URL](#) [Copy](#)

```
<iframe src="https://grimoirelab02.biterg.io/app/kibana#/da
```

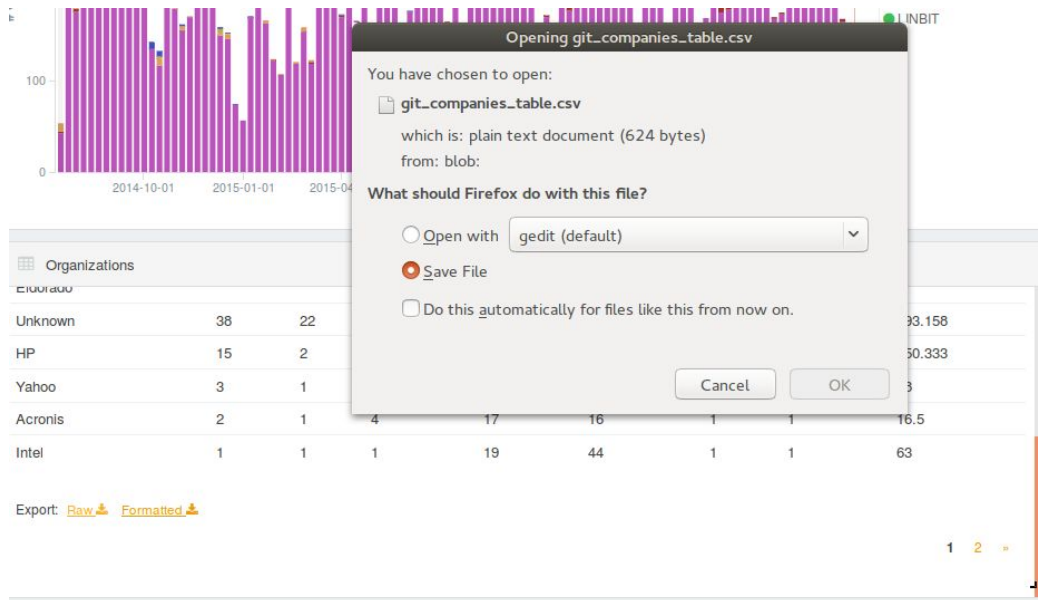
Add to your HTML source. Note that all clients must be able to access Kibana.

Link [Short URL](#) [Copy](#)

```
https://grimoirelab02.biterg.io/app/kibana#/dashboard/Over
```

Any widget can be exported as CSV

For any timeframe and for any filter



The screenshot displays a data visualization interface. At the top, a bar chart shows data points over time, with labels for 2014-10-01, 2015-01-01, and 2015-04-01. Below the chart is a table titled "Organizations" with columns for organization names and numerical values. At the bottom, there is an "Export" section with options for "Raw" and "Formatted". A modal dialog box is open in the foreground, titled "Opening git_companies_table.csv". The dialog contains the following text: "You have chosen to open: git_companies_table.csv which is: plain text document (624 bytes) from: blob:". Below this, it asks "What should Firefox do with this file?" and provides three options: "Open with" (set to "gedit (default)"), "Save File" (selected), and "Do this automatically for files like this from now on." (unchecked). "Cancel" and "OK" buttons are at the bottom right of the dialog.

Organizations									
Unknown	38	22							93.158
HP	15	2							50.333
Yahoo	3	1							3
Acronis	2	1	4	17	16	1	1		16.5
Intel	1	1	1	19	44	1	1		63

Export: [Raw](#) [Formatted](#)

[Part of the other workshop]

ElasticSearch documentation:

<https://www.elastic.co/guide/en/elasticsearch/reference/current/docs-get.html>

Example:

```
curl -XGET  
'https://elasticsearch_instance:443/project/git/_search/'
```

Other tools can be used instead of Kibana for viz

/search box

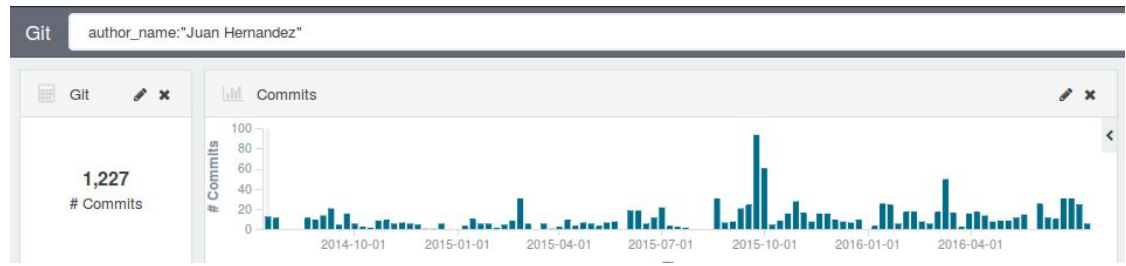
General search box for filtering purposes:

Look for specific field matches:

```
author_org_name:"Bitergia"
```

Or look for keywords across the several fields and indexes

```
Alvaro del Castillo => Either 'Alvaro' or 'del'  
or 'Castillo'
```



As information can be filtered and drilled down:

Useful to look for the details

List of commits or any other event in any index

Affiliations and unique identities

Check oddities in the datasets such as peaks

/data aggregation

Kibana allows for new features

Drill down, timeframe filter, creation of own widgets (talk after this one), and others

We can aggregate all info in a single dashboard

So we can later share or filter per project of interest



GrimoireLab Standard Panels

Look & Feel

Overview

Data Sources

Dashboard / Overview Share Edit Last 1 year Uses lucene query syntax

GrimoireLab02

- Overview
- Git
- GitHub PRs
- GitHub Issues
- Mailing Lists
- Data Status
- About

Powered by Grimoire Lab
Provided by Bitergia
Collapse

Top Authors

Author	Commits	Projects	Added Lines	Removed Lines	Avg. Files
Alvaro del Castillo	997	1	283170	11279	1.58
Santiago Dueñas	354	1	18042	5434	2.138
spalger	277	1	101660	171237	20.628

Organizations

- Bitergia
- Unknown
- Elasticsearch
- IBM

Projects

Project	Commits	Authors	Repositories
GrimoireLab	4,837	97	15

Git

Commits: 4,837 # Authors: 97

GitHub Pull Requests

Pull Requests: 521 # Submitters: 25

Mailing Lists

Emails: 46 # Email Senders: 12

Commits

Pull Requests

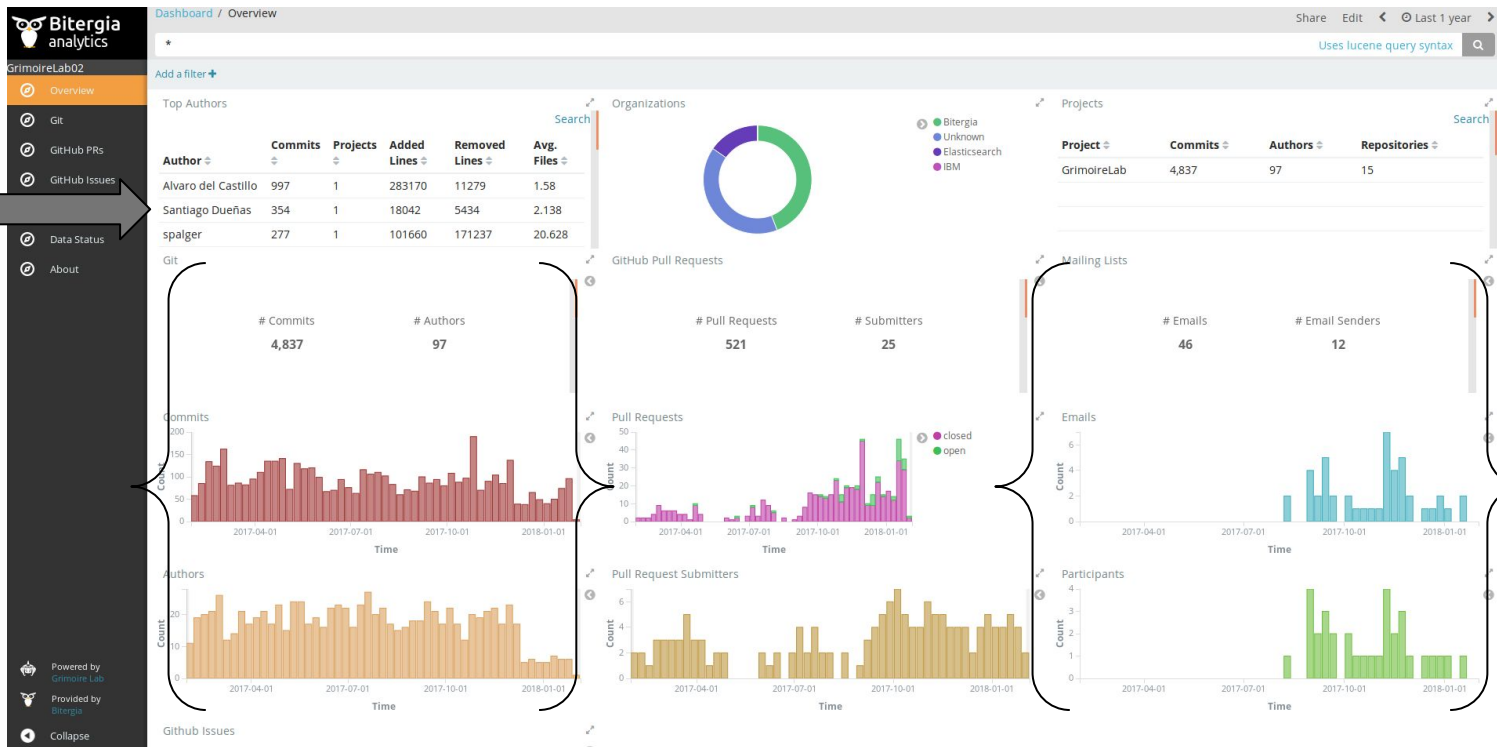
Authors

Pull Request Submitters

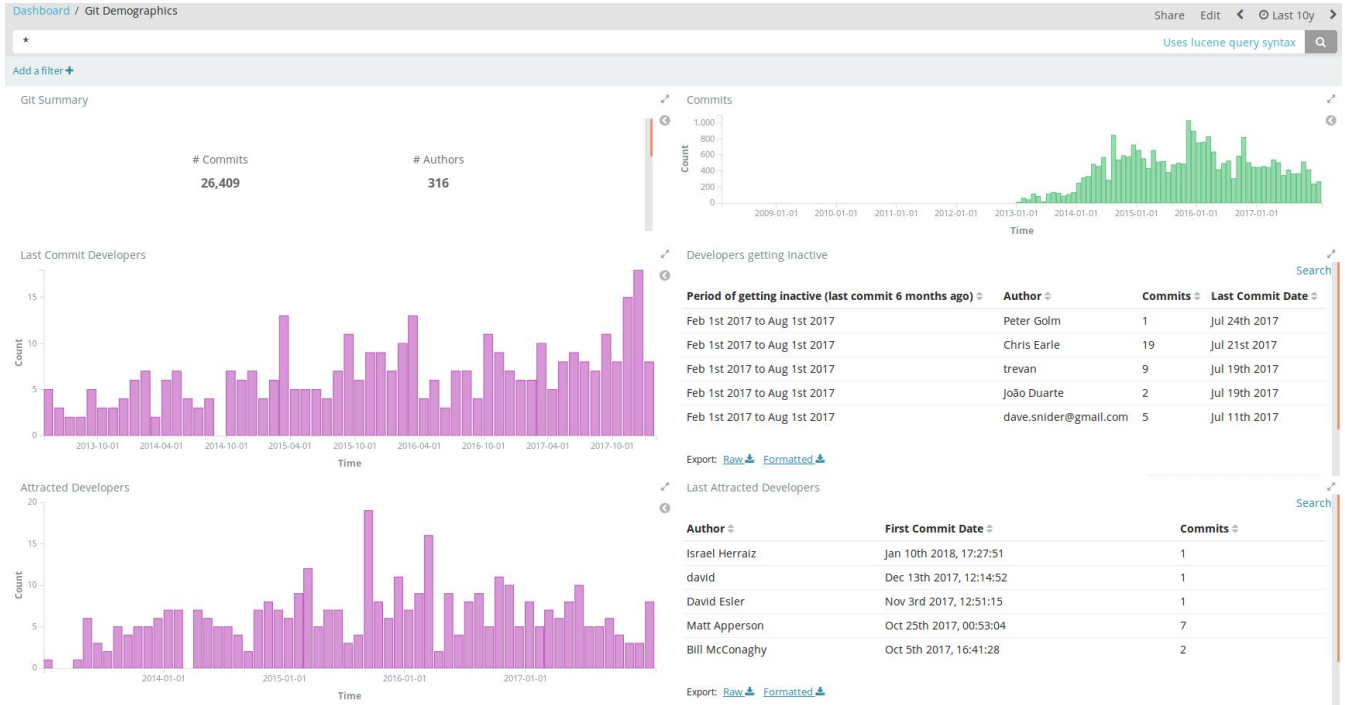
Emails

Participants

/overview



/git-demographics



/github-issues



Use Cases

Counting commits, what commits?

Searching commits for a dev

Newcomers to the community

Orgs active in a timeframe

Development bottlenecks

I have a GrimoireLab Dashboard, now what?

CHAOSCon/GrimoireCon
Brussels, Feb 2018

Alberto Pérez, Daniel Izquierdo
@alpgarcia, @dizquierdo
alpgarcia,dizquierdo at bitergia dot com
<https://speakerdeck.com/bitergia>

